



SAVE
SAN PASCUAL PARK

SAVE SAN PASCUAL PARK

A FUNCTIONING RIPARIAN HABITAT SHOULD BE PRESERVED



SAVE SAN PASCUAL PARK

INTRODUCTION

- The Arroyo Seco Water Reuse project is a joint effort by Pasadena and South Pasadena with the stated intent to capture and clean water from the Arroyo Seco Channel.
- Two sites will be used in the San Rafael and San Pascual basins for the water filtration systems. Some but not all of this water will be returned to the Arroyo Seco channel.
- Part of the permanent infrastructure would be built on Los Angeles land in San Pascual Park (CD14), which would be given to them by lease in perpetuity by Los Angeles Recreation and Parks.
- As a result of our lawsuit, Pasadena/South Pasadena are required to complete an Environmental Impact Report (EIR) for this project.

For more information please visit:

<https://www.cityofpasadena.net/public-works/engineering-and-construction/construction/arroyo-seco-water-reuse-project/>

SAVE SAN PASCUAL PARK

PASADENA WANTS TO TAKE LOS ANGELES PARKLAND



Pasadena wants to take one 1/2 acre of LA parkland for this project. They are trying to rename this LA Parkland as “open space”. The area will hold pumps and machinery and will be partially fenced off.

SAVE SAN PASCUAL PARK

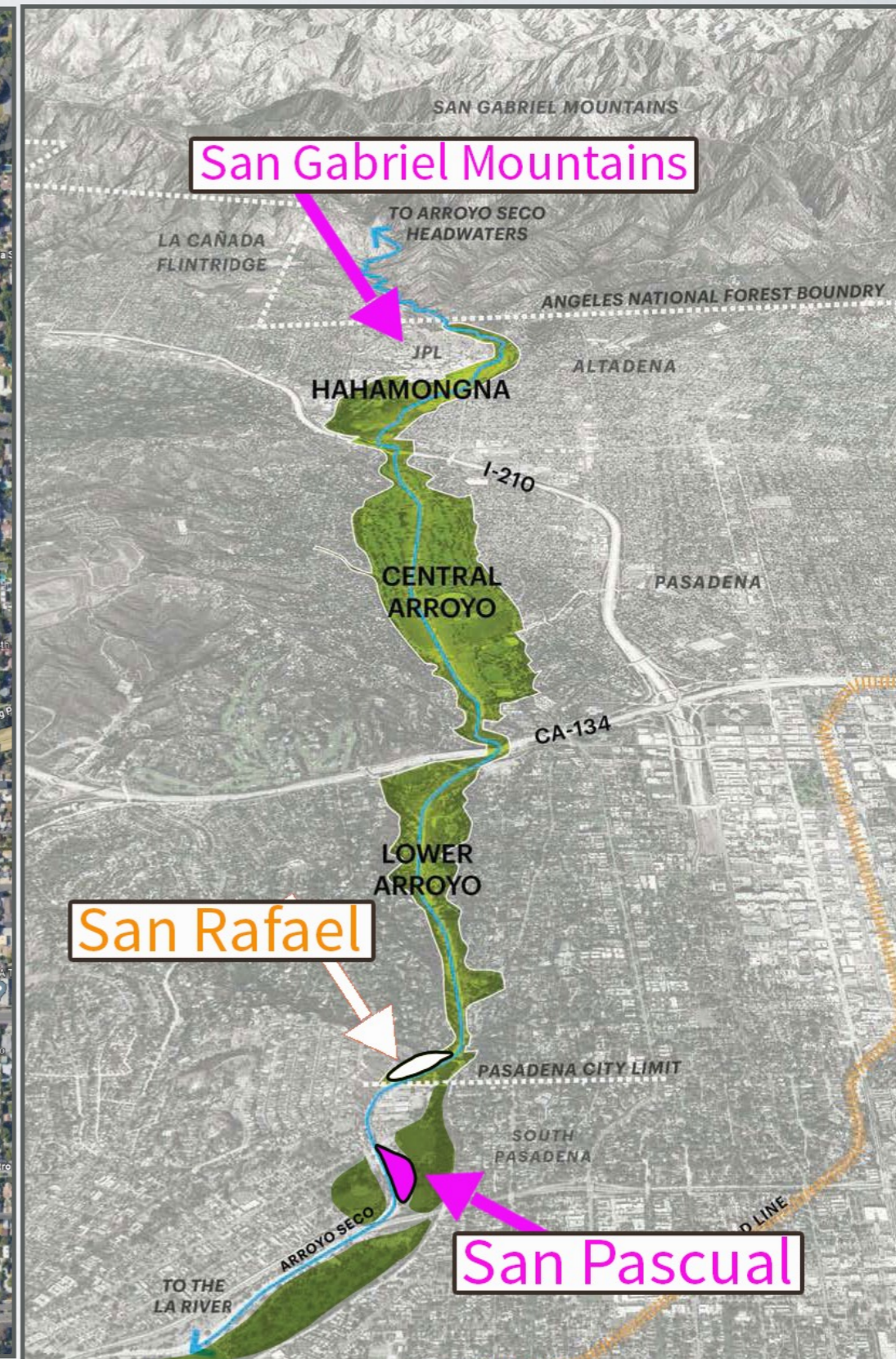
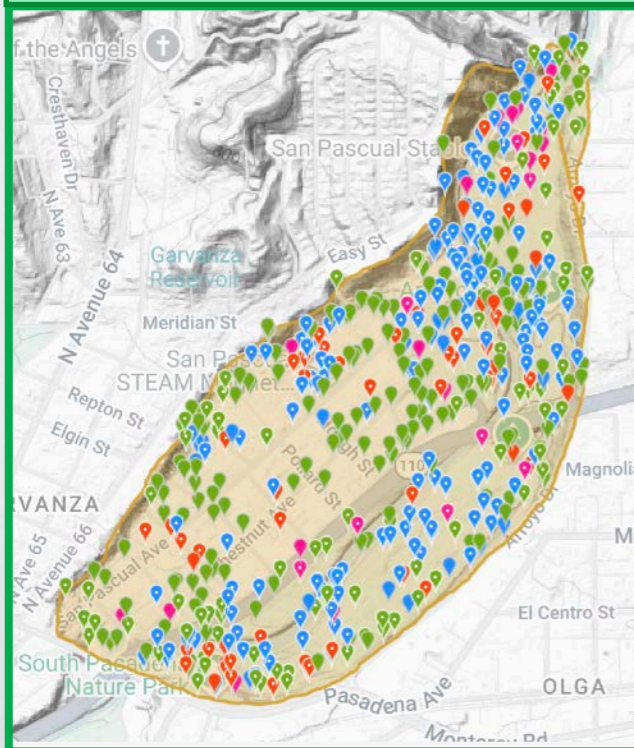
THE IMPORTANCE OF A WILDLIFE CORRIDOR

Both San Pascual and San Rafael parks are part of a vital wildlife corridor that connects San Gabriel mountains to Debs Park.

These two areas will be destroyed by two years of demolition, which includes cutting and uprooting trees, deep excavation, and the elimination of the water flow. The noise and dust alone will have a detrimental impact on this wildlife corridor and all the animals that depend on it for their survival.

Pasadena is dismissing these negative impacts on the community and the environment.

Naturalist observations in area of both parks and neighborhood

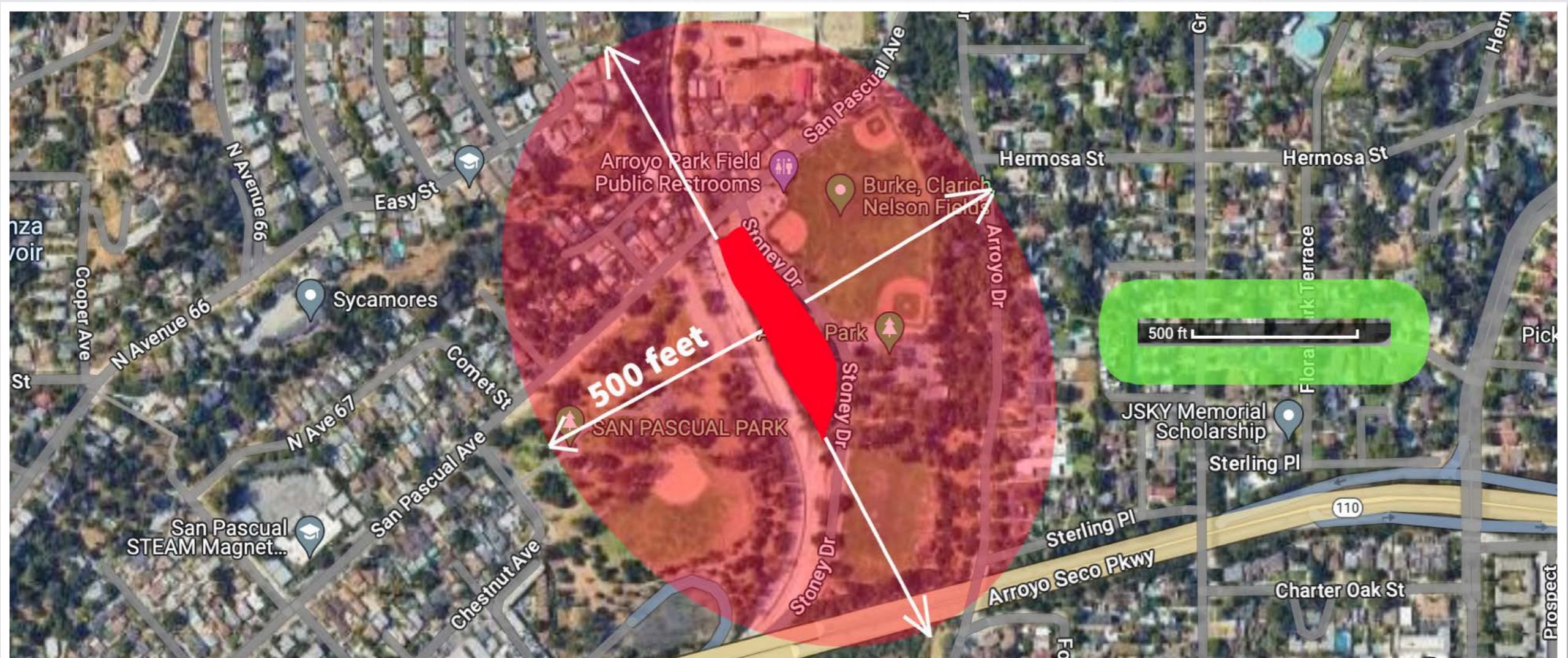


SAVE SAN PASCUAL PARK

POOR COMMUNITY OUTREACH

This project has had poor Los Angeles community outreach since the beginning

- Pasadena claims to have sent letters about the project to 200 families at 500 feet around the park, announcing the public review period. These were in English only, a violation of Title II of the Civil Rights Act.
- The community that uses this park resides MILES around the park and deserves to be informed about how our public park lands are used. The 500 feet area includes very few homes.



SAVE SAN PASCUAL PARK

POOR COMMUNITY OUTREACH

Community opposition grows as awareness of the project spreads

- With notices arriving on Black Friday, many local residents did not receive any notification. The public review period was during the Holidays between Nov 2023, to Jan 2024. As a result, only 2 comment letters from residents were received by Pasadena.
- Residents of Los Angeles were not invited to the early English-only meetings and therefore were denied the ability to have any input on what type of project was developed.
- Outreach from Pasadena to the community is still minimal. The community was not allowed to speak publicly at the only scoping meeting.
- Over 1500 signatures in opposition to this project have been submitted to local officials and Recreation and Parks Commissioners.

CITY OF PASADENA

NOTICE OF INTENT TO ADOPT A MITIGATED NEGATIVE DECLARATION AND NOTICE OF COMMUNITY MEETING FOR THE ARROYO SECO WATER REUSE PROJECT

Public Review Period: Comments on the Initial Study and Mitigated Negative Declaration may be received in writing from Wednesday, November 22, 2023, through Monday, January 15, 2024; and orally at future public hearing(s) considering these documents. Please submit comments in writing by 5:00 PM on January 15, 2024, to the attention of Christina Monde, City of Pasadena Department of Public Works, 100 North Garfield Avenue, 3rd Floor, Pasadena, California, 91101; or via email to cmonde@cityofpasadena.net. If you wish to challenge the Initial Study and Mitigated Negative Declaration in court, you may be limited to raising those issues that your or someone else raised at any public hearing where these documents were considered.

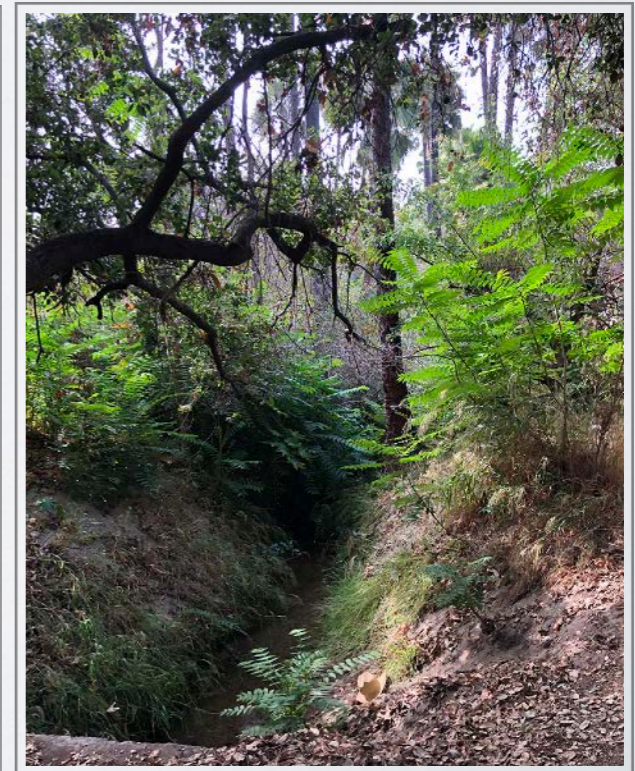
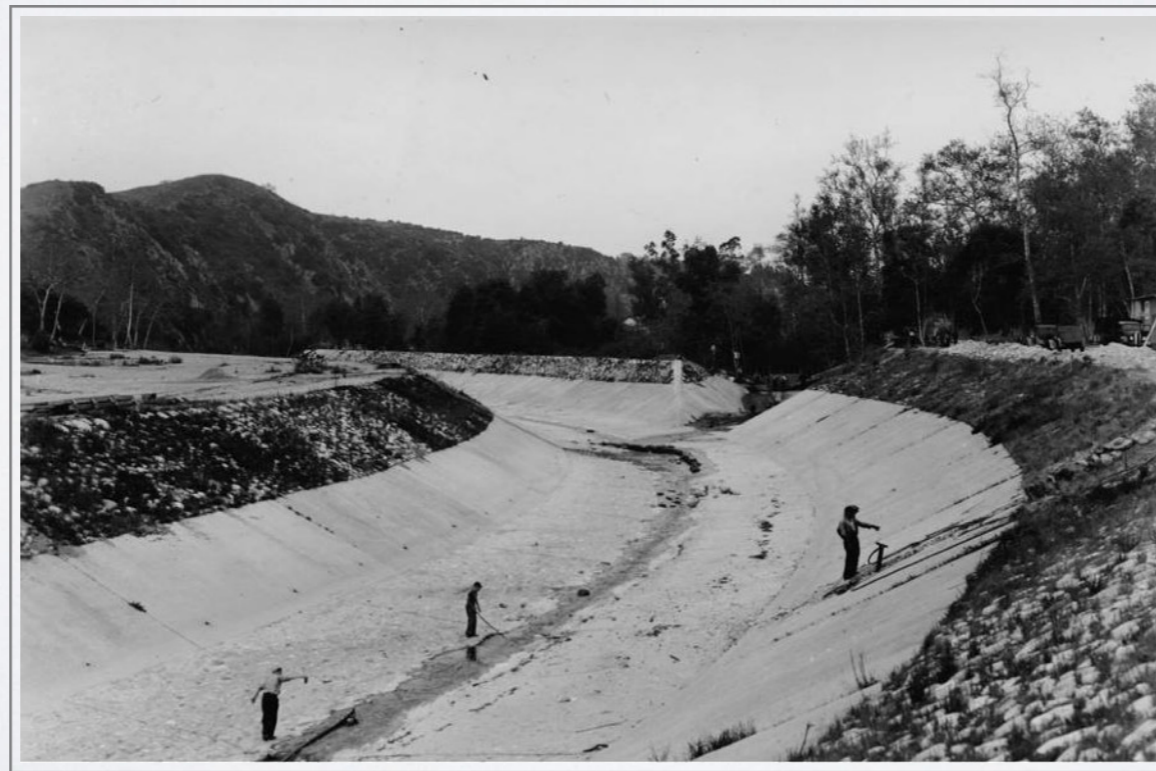
Short review timeline

SAVE SAN PASCUAL PARK

HISTORIC SIGNIFICANCE OF A PUBLIC PARK

San Pascual is an historic park that belongs first and foremost to the public

- Many people use this area daily and share precious memories of enjoying the forest and sitting by the water.
- Public park land cannot be transferred between cities without formal legal steps including public hearings. Los Angeles Charter 594C says: “All lands heretofore or hereafter set apart or dedicated as a public park shall forever remain for the use of the public inviolate.” Environmental injustice for local community.
- The park has significance to the Gabrieleno Kizh as an ancient sacred site with sacred trees. AB 52 requires public agencies to consult with tribes during the CEQA process.
- The LA portion of San Pascual also holds a historic Stone Hitching post, some area hitching posts date back to the early 1900’s. Additionally, some of the trees could be 100 years old, based on their size.



SAVE SAN PASCUAL PARK

SAN PASCUAL IS A SACRED LAND

The Gabrieleno Kizh Nation are opposed to this project.

A Sacred Land Search, identified the Gabrieleno Band of Mission Indians, Kizh Nation at this site.

Hereditary Chief Andy Salas, states in a letter to Pasadena: “There was never a complete formal consultation conducted with our tribe under CEQA or AB 52, as required by law. Due to the sensitivity of the area and its known connection to sacred sites and tribal cultural resources, **we are formally requesting full avoidance of this location**”.



SAVE SAN PASCUAL PARK

PRESERVE OUR CULTURAL HISTORY



Historic Hitching Post in
San Pascual Park

Unmarked without a plate



One of several Historic Hitching posts in
Pasadena

Has a plate "Preserved and maintained as a natural park"



SAVE SAN PASCUAL PARK

ENVIRONMENTAL IMPACT

This project will cause permanent negative environmental impacts

Water reduction in the Arroyo

- Less than half the water captured will be filtered and returned to the Arroyo Seco. This will undoubtedly create a negative impact on the downstream ecology.
- 20 Million gallons of water will be also diverted to the South Pasadena Golf Course with no benefit to Los Angeles parks.

Forest destruction

- The plans intend to remove 86% of the existing trees in the area (130 mature trees including protected Oaks, Sycamores, and Elderberries), which will decimate a local ecosystem. This forest reduces heat, noise, and pollution. If these trees are cut down, these benefits will be lost and impact the entire area.
- It will take 20-50 years for replacement trees to bring back the benefits of a mature canopy to the community.

Elimination of a natural ecosystem

- A natural delicate riparian habitat will be destroyed. US Fish and Wildlife Service recognizes this area as a wetland.
- This park is a Coast Live Oak/Sycamore Woodland and sensitive natural community.
- The San Pascual diversion will block fish passage and eliminate stream flow during critical periods.
- No mitigation can save the countless birds, bats, fish and mammals that rely on the San Pascual forest during 2 years of construction.

Reduced quality of life for people

- Overall, this plan destroys the natural beauty of San Pascual Park.
- The benefits of forest on visitor's and community health and well being will be lost.
- Noise, dust, and air pollution during the probable 2 years construction, will affect the community's health.



SAVE SAN PASCUAL PARK

WATER CAPTURE IN SAN PASCUAL

The water capture will undoubtedly have serious repercussions to wildlife all the way down the channel to the ocean, especially in drought years

- The project intends to capture about **175 Million gallons** of water (535 Acre Feet) annually on an average year of rainfall at the San Pascual site.
- 60% of the total water captured - over **100 million gallon** of water (258 AF + 62 AF) - will be held or diverted annually
- South Pasadena will hold onto about **85 million gallons** (258 AF) of water on the site. None of this water will be shared with Los Angeles.
- **20 million** gallons of this water (62 AF) will be diverted to the South Pasadena Golf Course for their use. None of this water will be shared with Los Angeles.
- It is questionable if South Pasadena has California Water Rights to divert water from the Arroyo Seco to their golf course.

Source of Water Amounts:

<https://www.cityofpasadena.net/public-works/wp-content/uploads/sites/29/2023-04-27-Second-Community-Meeting-Graphic-Boards.pdf>

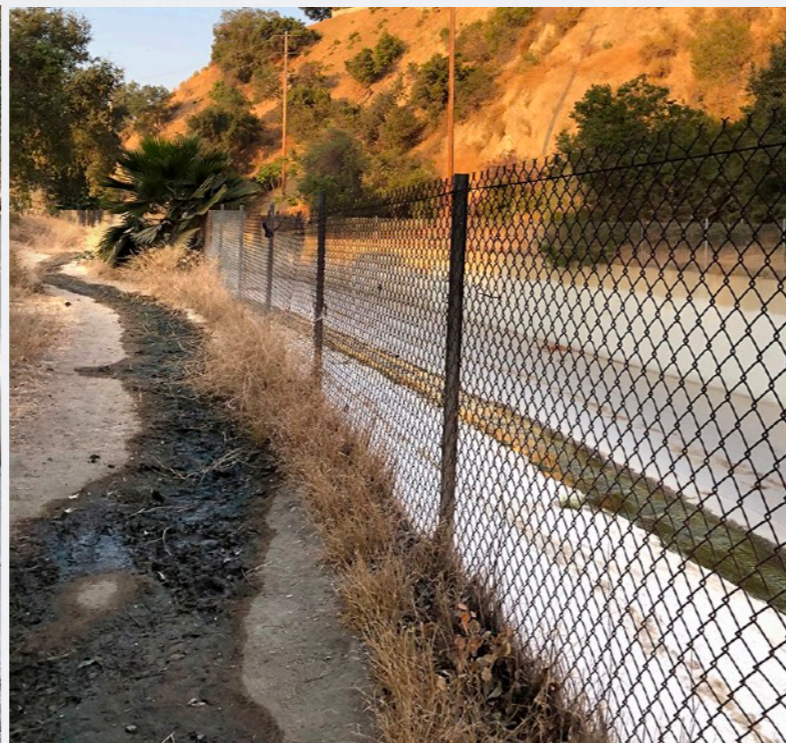
SAVE SAN PASCUAL PARK

WATER POLLUTION

- Save San Pascual Park is not opposed to cleaning the Arroyo Seco water. However we object to this project, based on its unsustainable nature and destruction of a natural habitat.
- Pasadena and South Pasadena are using old water pollution data from 2012 to justify this project.
- Pasadena claims they cannot know the exact sources of pollution.
- Save San Pascual Park has obtained recent water pollution city data that clearly identifies several sources that could be treated at the source.



Foam indicating pollution



Horse stable runoff



Dark muck flowing into the River

SAVE SAN PASCUAL PARK

A FOREST DESTROYED

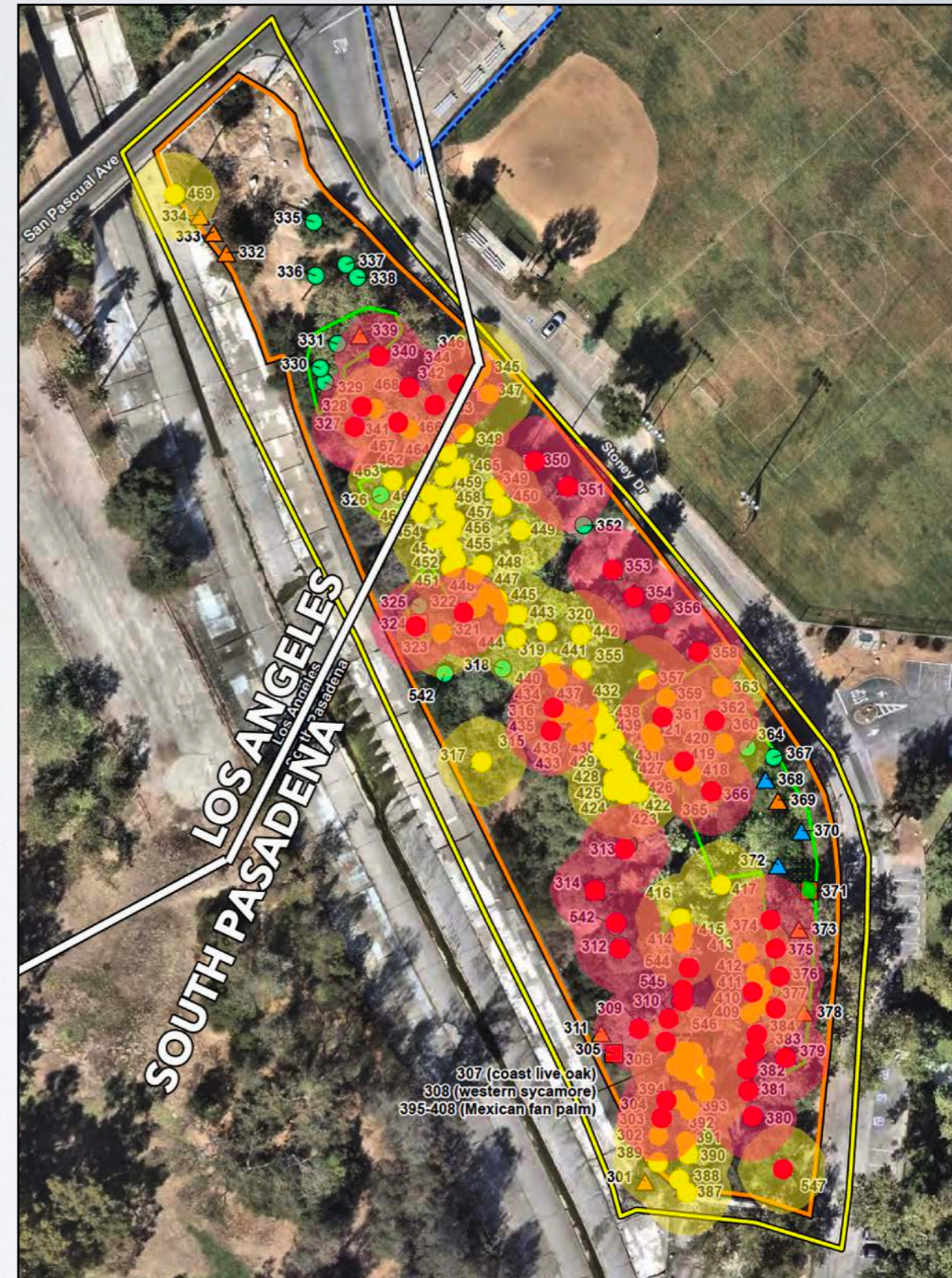
Pasadena intends to cut down over 136 mature trees for this project, which will have a permanent and negative impact on the whole valley and all wildlife that depends on it.

- This diagram shows all the **130** trees removed out the counted* **157** trees in San Pascual. Only **27** trees will remain.
- With over **86%** of all the trees destroyed, the chance of survival of the remaining **14%** is questionable despite the best mitigations.

- bubble indicates a protected tree to be removed
 - bubble indicates a non-protected tree to be removed
- Many of the tree canopies are larger than bubble size.

** There are 40+ uncounted protected smaller trees, native trees such as Holly Cherry, Laurel Sumacs. (dark areas on this map)*

Source: EIR volume 2 pg 655, 662, 663, 666-675



SAVE SAN PASCUAL PARK

Pasadena claims this will be a nature based park with a restored wetland.
It will take 20-50 years for the newly replanted trees to capture the benefits of this mature forest

This is the land now



This is what will happen to San Pascual



SAVE SAN PASCUAL PARK

Deep pools excavated, augmenting dust and heat bowl effect .

Saved trees may not survive

BEFORE



AFTER

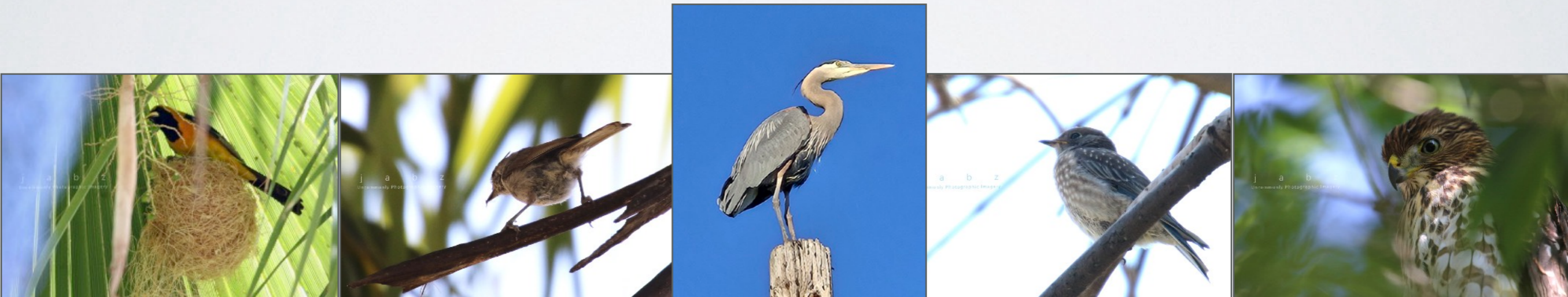


SAVE SAN PASCUAL PARK

AN ECOSYSTEM LOST

The impact of this project will decimate the current ecosystem

- The demolition and construction process will destroy the food sources for multiple species.
- This biodiversity loss will reduce the survival of all interdependent species and will cascade throughout the area.
- The impact on multiple bird species seen in San Pascual will be severe regardless of “mitigating” nesting seasons. Even if mature birds fly away, their habitat will be destroyed and will take years to restore.
- With the removal of all palm trees in the area, the bats habitat will be eliminated. This is severe since they are important to the ecology of the area.



Bird photos taken from San Pascual (From left to right):
Hooded Oriole, Oak Titmouse, Blue Heron, Western blue bird, Cooper hawk
(Photos by JBZ and Rosa)

SAVE SAN PASCUAL PARK

It is impossible to declare that this project has no significant impact

- There will be significant impact and loss considering all aspects of the environment, wildlife, public use, water use, indigenous history, archeology, and neighborhood health and well-being.
- South Pasadena has not produced any documentation to their water rights to the Arroyo Seco.
- Two years of construction will create noise, pollution, dust, and destruction that will impact the whole area and its many users, both human and wildlife. Mitigation at its best cannot save countless nests and animal habitat that will be eliminated.
- Eliminating the water flow and the interconnectedness of the trees during construction will destroy the ecosystems that currently exists.
- It will take 20-50 years to recapture the cool shade, protection, and beauty of the environment that will be destroyed.

SAVE SAN PASCUAL PARK

Parks and natural spaces are public assets and should be treated as such. They offer recreational opportunities, environmental benefits, and a connection to nature that is vital for our well-being.

It's crucial for any decisions regarding these spaces to involve public input, respect the local and indigenous perspectives, and safeguard personal connections to this park and all its living creatures.

It is the obligation of those responsible for preserving public park lands to ensure these natural resources are safeguarded for current and future generations.

Group and individuals opposed to the Water Reuse Project

COUNCILMEMBER YSABEL JURADO, CD 14

LOS ANGELES SCHOOL BOARD MEMBER, ROCIO RIVAS, BD 2

GABRIELENO BAND OF MISSION INDIANS - KIZH NATION

STEWARDS OF THE ARROYO SECO

FRIENDS OF SOUTH PASADENA NATURE PARK

EAST AREA PROGRESSIVE DEMOCRATS (EAPD)

SIERRA CLUB

LOS ANGELES AUDUBON

LOS ANGELES COMMUNITY FORESTRY ADVISORY COMMITTEE (CFAC)

CLAW CITIZENS FOR LOS ANGELES WILDLIFE

COYOTL MACEHUALLI

LOS ANGELES CLIMATE REALITY PROJECT

SAN PASCUAL ARROYO SECO WILDLIFE PRESERVATION

HISTORIC HIGHLAND PARK NEIGHBORHOOD COUNCIL

ARROYO SECO NEIGHBORHOOD COUNCIL

LINCOLN HEIGHTS NEIGHBORHOOD COUNCIL

LOS FELIZ NEIGHBORHOOD COUNCIL

GARVANZA IMPROVEMENT ASSOCIATION

HISTORIC GARVANZA COALITION

HIGHLAND PARK HERITAGE TRUST

MONTECITO HEIGHTS IMPROVMENT ASSOCIATION

NORTH EAST LOS ANGELES SAVE OUR OPEN SPACES (NELA SOUL)

AND OVER A FOUR THOUSAND INDIVIDUALS FROM OUR COMMUNITIES